

# Please enrol your child to help keep everyone safe from the virus

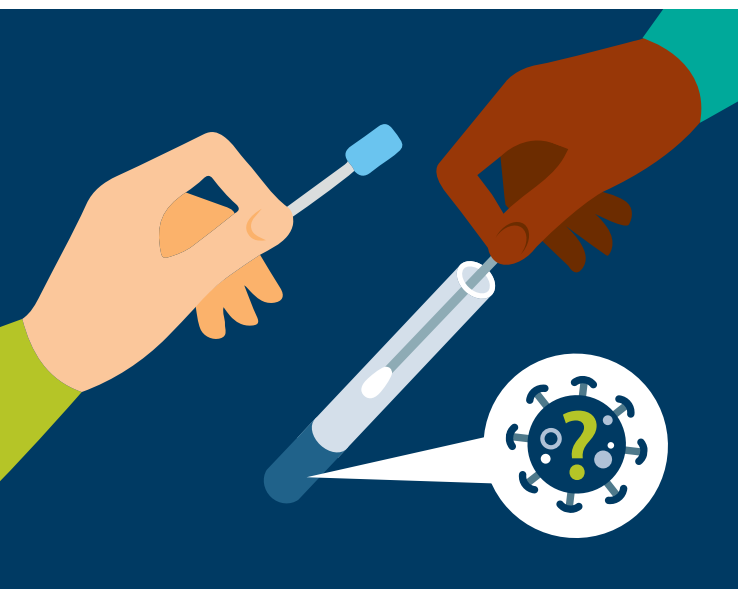
The coronavirus (COVID-19) pandemic is having a major impact on all of us.

We are testing children and staff in a number of schools across England in this Schools Infection Survey (SIS). This research study will provide an understanding of the transmission of COVID-19 in schools.

**Please enrol your child so they can join their classmates in the 'SIS Squad' of volunteers.**

By doing so, you will help keep everyone safe from the virus, help government understand how the pandemic is progressing and help get us all back to school and work - for good.

Every test makes a difference.



## How to enrol your child

- 1 To enrol online, follow the link in the digital letter you received.
- 2 **Complete and submit the online consent form and questionnaire.**



## We are taking two swabs.

One from your child's nose to tell if they have the virus now.

Plus, one from your child's mouth to tell if they have had it in the past.

### How is the nostril swab taken at primary school?

- The swab is taken by a nurse or trained professional
- It only goes just inside the tip of the nose, gently
- No force is needed
- It takes just a few seconds



### How is the nostril swab taken at secondary school?

- Pupils take the swab themselves
- A study worker helps to ensure the swab is taken correctly
- It only goes just inside the tip of the nose, gently
- No force is needed
- It takes just a few seconds



### How is the oral swab taken?

- Saliva swabs are taken by the children themselves
- A study worker will play a video showing how to do it
- The swab involves putting a small sponge between the gum and teeth
- It only takes 2 minutes
- The swab is soft and does not hurt

